



**4636 Jonestown Road, Harrisburg, PA**

- Spectacular 2,800 SF commercial property on 1.27 acre available for sale.
- Located in the midst of nearly 2 million SF of prime retail space.
- Ideal for any user who requires strong traffic, high visibility and easy access.
- Former bank building with vault makes for an ideal conversion for any financial institution. (2198)



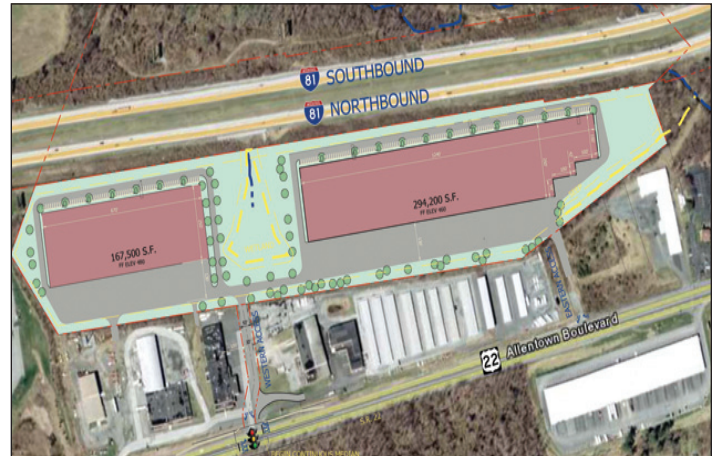
**Rt. 39 & Old Jonestown Road, Harrisburg, PA**

- 1.35 acre site on Rt. 39 & Jonestown Road
- 3.30 acre site on Rt. 39, Jonestown Road & Harper Road.
- Less than a mile from Exit – 77 of I-81.
- Sites located at fully controlled intersections. (2297 & 2275)



**Rt. 30 & Rt. 15 – Gettysburg Station, Gettysburg, PA**

- 29 acre site approved for a 200,000 SF retail development center.
- Located on Gettysburg's main retail corridor with high traffic counts.
- Proposed traffic controlled intersection into the development.
- Site is in close proximity to Walmart, Giant foods and Peebles. (2344)



**I-81 Business Center, Rt. 22 & I-81, Harrisburg, PA**

- Preliminary plan approved site for up to 461,700 SF on 30± acres.
- Class "A" distribution facility – (2) building layout.
- Signature visibility + access to nationally recognized I-81 corridor.
- Public utilities and rear load design.
- Controlled access off Route 22. (2203)



**Hartzdale & Lower Allen Drive, Camp Hill, PA**

- 1 acre retail/bank pad site available across from Capital City Mall.
- Land lease or out-right sale.
- Situated at newly constructed full diamond interchange of Rt. 15 and Lower Allen Dr.
- New red light under construction for easy access off Hartzdale Drive. (2066)



**I-81 & I-78, Lickdale, PA**

- 35 acre big box distribution development site approved for 450,000 SF cross-dock warehouse facility with on-site trailer parking.
- Corporate Neighbors: Sid Tool, Tyco, Ingram Micro & Swift Transport.
- Located at the intersection of I-81 & I-78 – Visibility and access to all East Coast sub-markets.
- Nationally recognized I-81 corridor location. (2332)

## LAND TABLES

LOCATION	COUNTY	SIZE	OFFICE ZONING	COMMENTS
560 E. Main Street, Kutztown, PA - (2319)	Berks	0.34 acres	Highway Commercial	Corner site adjacent to Kutztown University
331 York Road, Carlisle, PA - (1767-1791)	Cumberland	1.16 acres	Commercial Village	Adjacent to Carlisle Crossing Shopping Center
4680 Trindle Road, Mechanicsburg, PA - (1820)	Cumberland	1.0 acre	Commercial General	Corner site at lighted intersection
Hartzdale & Lower Allen Drive, Camp Hill, PA - (2066)	Cumberland	1.0 acre	Commercial Highway	Bank pad site adjacent to Capital City Mall
4001 N. Front Street, Harrisburg, PA - (2257)	Dauphin	1.11 acre	Commercial Office Limited	Landlease ideal for fast food or bank
20 Marsh Drive, Carlisle, PA - (2114)	Cumberland	1.38 acres	Commercial	High profile site just off I-81
Rt. 30 & Rt. 75, Fort Loudon, PA - (2303)	Franklin	1.44 acres	Unzoned	Corner site of signalized intersection
449 Eisenhower Blvd, Harrisburg, PA - (1893)	Dauphin	1.78 acre	Manufacturing Limited	Highly visible site in TecPort Business Center
909 Newville Road, Carlisle, PA - (2155)	Cumberland	1.89 acre	Commercial	Currently being used for auto sales
9168 Allentown Blvd, Harrisburg, PA - (2188)	Dauphin	2.7 acre	Highway Commercial	Minutes from Casino and Grantville Race Track
Rt. 11 & Hykes Road, State Line, PA - (2300)	Franklin	2.8 acres	Community Commercial	Ideal for small retail center
Lisburn & Mill Roads, Mechanicsburg, PA - (2284)	Cumberland	3.2 acres	Highway Commercial	Corner lot – Easy access from Rt. 15
Rt. 22/322 & Rt. 34, Newport, PA - (2166)	Perry	3.26 acres	Commercial	Adjacent to Newport Plaza and Giant Foods
N. Hills Rd, York, PA (2206)	York	4 acres	Flex Dev. District	Great Rt. 30 visibility
Stoversdale & Middletown Road - NEQ, Hershey, PA - (2186)	Dauphin	5 acres	Commercial Neighborhood	Ideal bank or convenience store location
Rt. 30 & Rt. 15, Gettysburg, PA (2344)	Adams	29 acres	Commercial Highway	Plan approved 200k SF development

COMMERCIAL

LOCATION	COUNTY	SIZE	OFFICE ZONING	COMMENTS
920 Century Drive, Mechanicsburg, PA - (2087)	Cumberland	1.5 acre	General Commercial	Convenient to Rt. 15 & PA Turnpike
Old York Rd, Rossville, PA - (2034)	York	1.8 acres	Village Commercial	Commercial site in growing area
Old York Rd, Rossville, PA - (2034)	York	2.5 acres	Village Commercial	Commercial site in growing area
Lot 5-C, Sir Thomas Court, Harrisburg, PA - (2231)	Dauphin	3.4 acres	Research Office	Professional office park setting
1400 Fulling Mill Road, Middletown, PA - (2189)	Dauphin	5 acres	Commercial Neighborhood	Just off Rt. 283 & PA Turnpike

OFFICE

LOCATION	COUNTY	SIZE	OFFICE ZONING	COMMENTS
1 Bishop Place, Camp Hill, PA - (1650)	Cumberland	2.5 acres	Industrial	Up to 25,000 SF available Q2 2009
Westminster Drive, Carlisle, - PA - (1410)	Cumberland	4.66 acres	Commercial	Public utilities – Ideal for Flex users
Lebanon Valley Parkway, Lebanon, PA - (2239)	Lebanon	11± acre	Industrial	Up to 100,000 SF building with outside storage
Rt. 22 & I-81, Harrisburg, PA - (2203)	Dauphin	30 acres	Light Industrial	Plan approved 461,700 SF – (2) building layout
I-81 & I-78, Lickdale, PA (2332)	Lebanon	35 acres	Industrial Park	Approved 450,000 SF big box site

INDUSTRIAL

**FOR MORE INFORMATION ON OUR PROPERTIES, PLEASE VISIT OUR WEBSITE  
WWW.LANDMARKCR.COM OR CALL US AT 717-731-1990**

*Landmark Commercial Realty – Providing Commercial Real Estate Solutions for over 20 years.*

The information herein is not warranted and is subject to correction or change without notice. We assume no liability for errors or omissions. Property Owner has the right to accept or reject all offers. Landmark Commercial Realty, Inc., can represent the Buyer/Tenant as a buyer's agent, or the Buyer/Tenant and Seller/Landlord as a dual agent, but unless otherwise specified in writing, Landmark Commercial Realty, Inc., is only representing the Seller/Landlord as a Seller's agent.